



ENGAGING NEW PARTNERS BUILDING IMPORTANT COLLABORATIONS

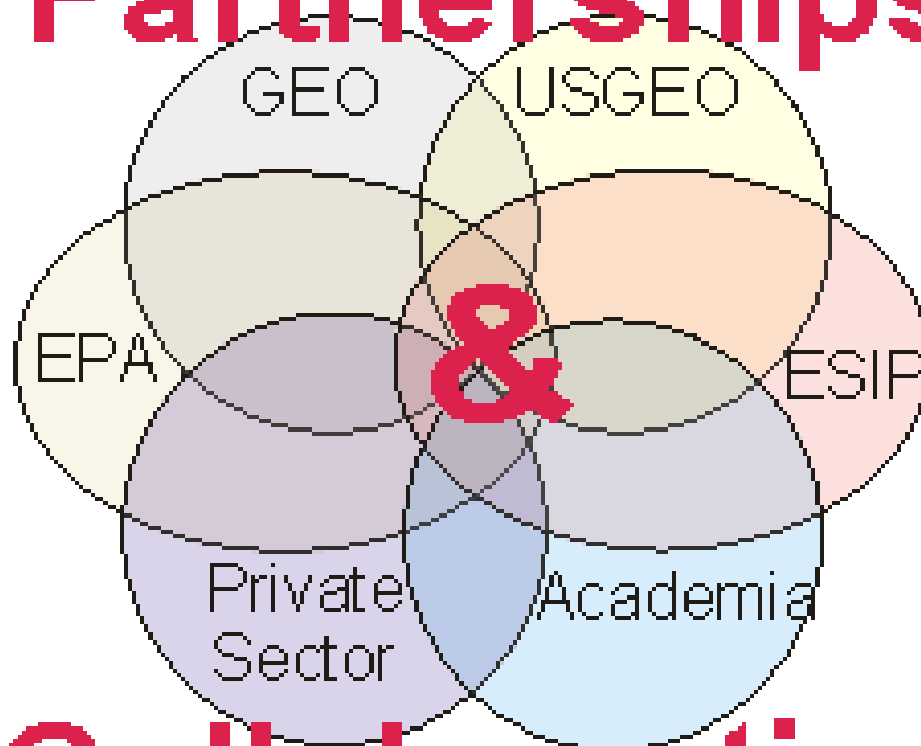
4 January 2012

Gary J. Foley, PhD

Senior Advisor to the Assistant Administrator
for Research and Development

US Environmental Protection Agency

Partnerships

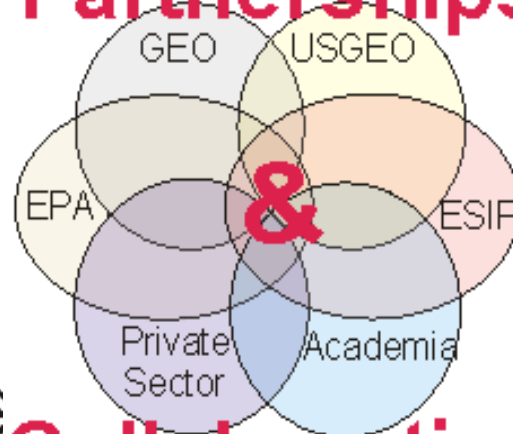


Collaboration

Data
Deliver for
Decisions

The
Public

Partnerships



Stakeholders

Global Movements

Collaboration

Sustainable
Development

Why GEOSS?

The more we understand the Earth, the better stewards we become.



Climate Change



Energy Resources




Ocean Resources



Disasters



Weather



Sustainable Agriculture



Water Resources



Ecological Forecasts



Human Health

**Data from
Providers**

**Societal
Benefits**

**Interdisciplinary, Multi-disciplinary
Trans-disciplinary Collaboration**

**Communities
Of
Practice**





The Concept of “Community of Practice”

Groups of people who share a concern, a set of problems, or a passion about a topic and deepen their knowledge by interacting on an ongoing basis

Bring together...

- Users
- Providers
- Universities and research institutions
- Technology development actors
- Developed countries
- Developing countries

The Air Quality Community

The Public &
Public Officials



EPA, 2005

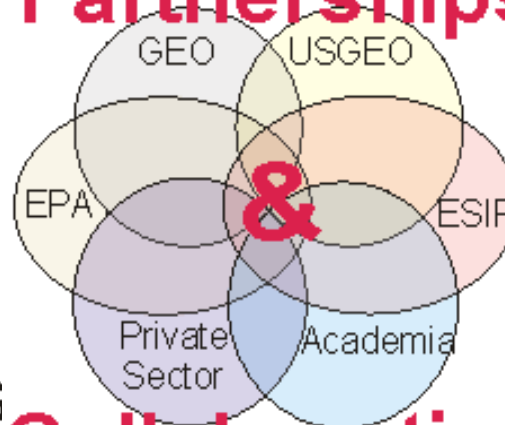
Communities
of Practice



Data
Deliver for
Decisions

The
Public

Partnerships



Global Movements

Collaboration

Sustainable
Development



From the Concept of

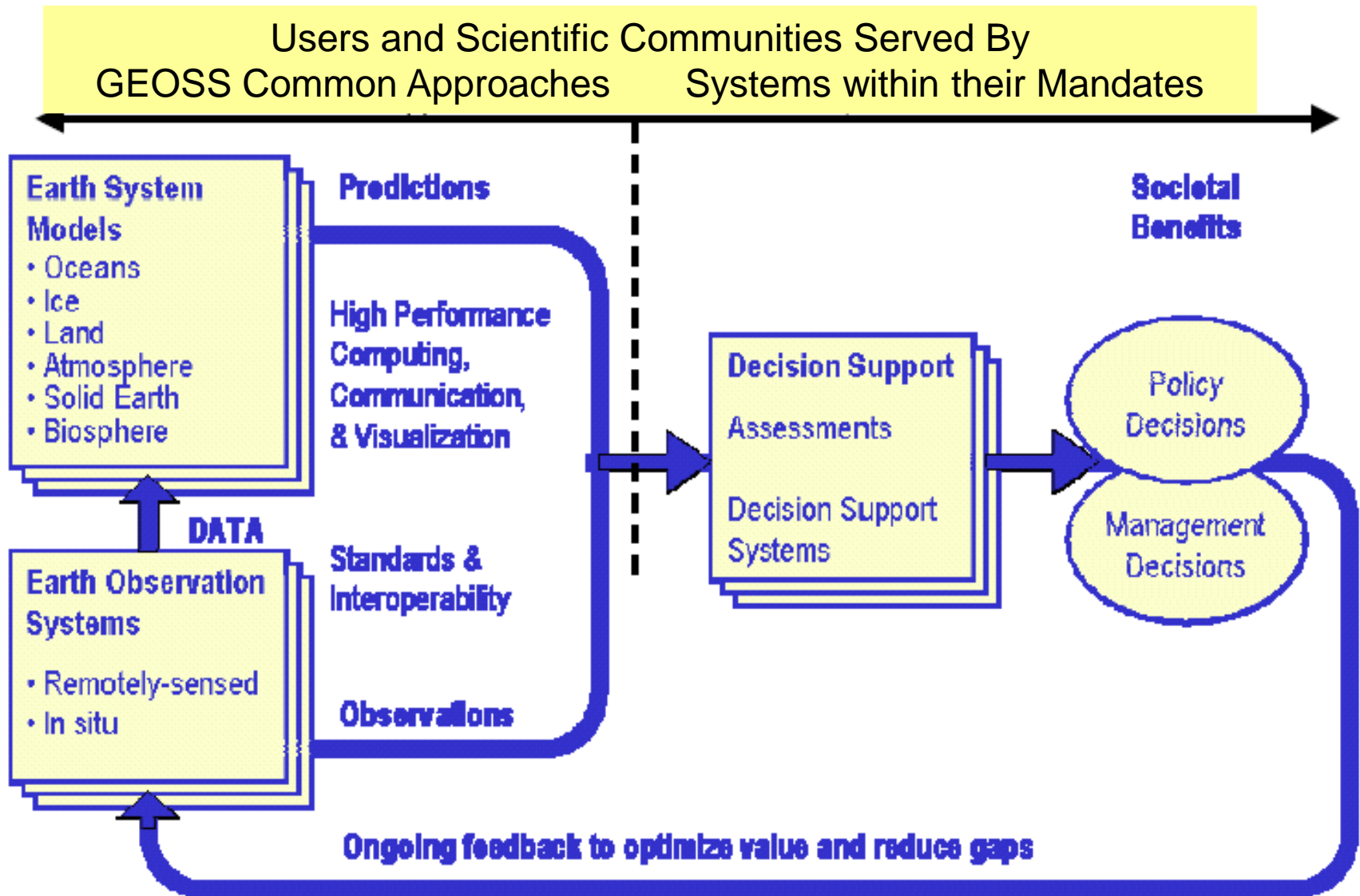
Sustainable Development

**Economic
Prosperity**

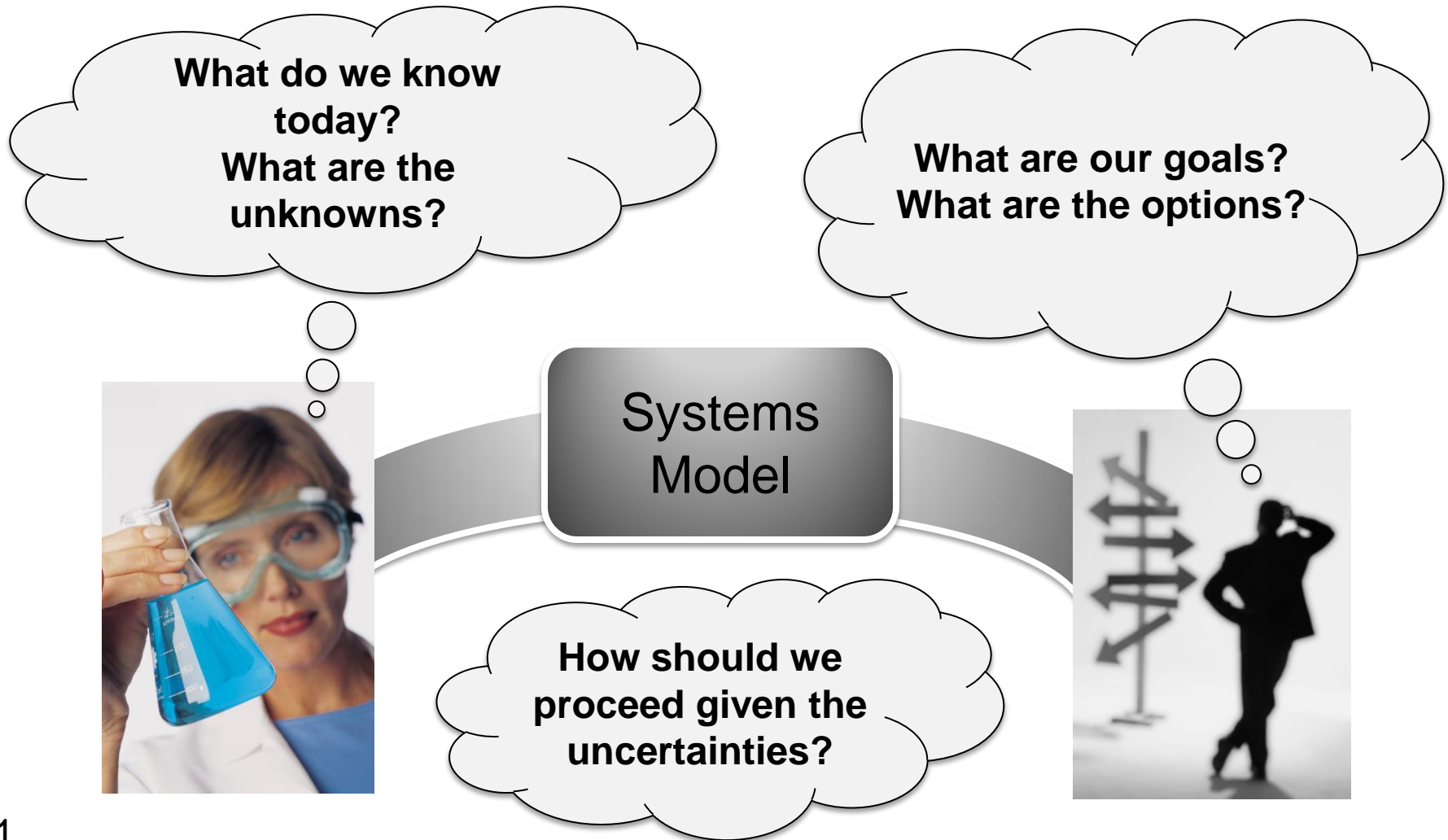
**Environmental
Protection**

**Social
Justice**

With the GEOSS Architecture



To Partnerships & Collaboration Bridging Science and Policy



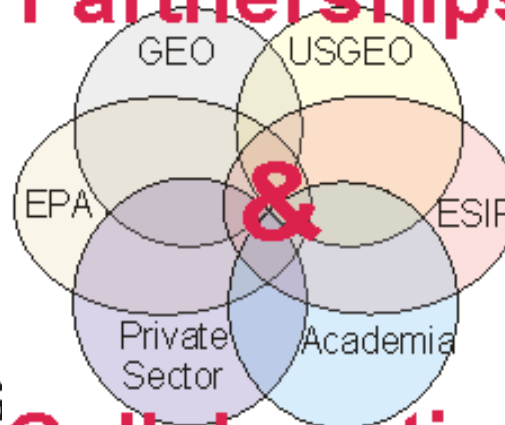
Communities
of Practice



Data
Deliver for
Decisions

The
Public

Partnerships



Global Movements

Collaboration

Sustainable
Development





Seven Priorities for EPA's Future

- Taking action on climate change
- Improving air quality
- Assuring the safety of chemicals
- **Cleaning up our communities**
- Protecting America's waters
- **Expanding the conversation on environmentalism and working for environmental justice**
- **Building strong state and tribal partnerships**



EPA Administrator
Lisa P. Jackson



Seven Priorities for EPA's Future

- Taking action on climate change
- Improving air quality
- Assuring the safety of chemicals
- **Cleaning up our communities**
- Protecting America's waters
- **Expanding the conversation on environmentalism and working for environmental justice**
- **Building strong state and tribal partnerships**



EPA Administrator
Lisa P. Jackson



Seven Priorities for EPA's Future

- Taking action on climate change
- Improving air quality
- Assuring the safety of chemicals
- Cleaning up our communities
- **Protecting America's waters**
- **Expanding the conversation on environmentalism and working for environmental justice**
- **Building strong state and tribal partnerships**



EPA Administrator
Lisa P. Jackson



Seven Priorities for EPA's Future

- Taking action on climate change
- Improving air quality
- Assuring the safety of chemicals
- Cleaning up our communities
- **Protecting America's waters**
- **Expanding the conversation on environmentalism and working for environmental justice**
- **Building strong state and tribal partnerships**



EPA Administrator
Lisa P. Jackson

Communities
of Practice

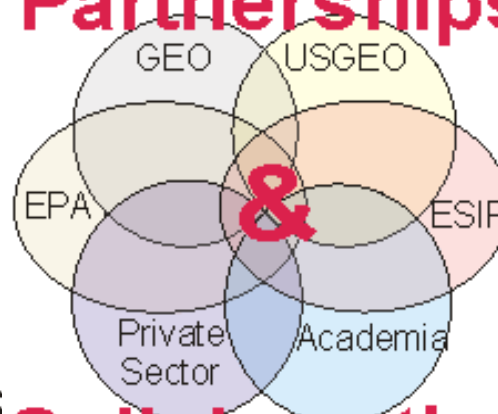


Data
Deliver for
Decisions

Communities

The
Public

Partnerships



Stakeholders

Global Movements

Collaboration

Sustainable
Development

Sustainable Development



Communities

Focusing on environmental issues that matter to communities and empowering citizens and community groups to take action to improve their health and environment.

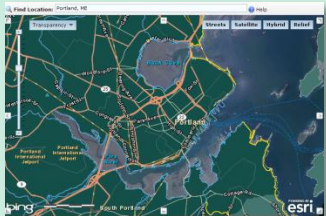
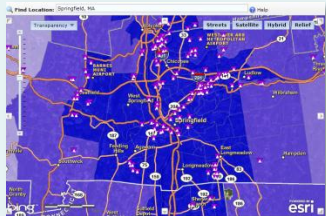
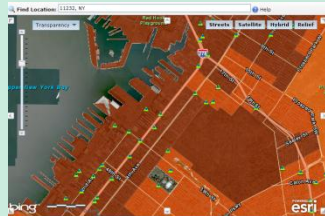
An Example

**EPA's C-FERST Tool and
the Lessons Learned**

What is C-FERST?

Community-Focused Exposure and Risk Screening Tool:

C-FERST is EPA's **GIS and information access Web tool** for conducting cumulative human exposure and risk screening assessments, **to support new decision-making by the communities** in order to become more **sustainable and healthy.**

	Portland, ME	Springfield, MA	Brooklyn, NY
Initial Issues Considered	 <ul style="list-style-type: none"> • outdoor air pollution • water quality • lead in old homes & soil • elevated childhood BLL • bike & pedestrian safety 	 <ul style="list-style-type: none"> • ambient air quality • home & school IAQ • lead • health disparities 	 <ul style="list-style-type: none"> • air quality • access to healthy affordable foods • pedestrian street safety • return of B37 bus line
Additional Issues Identified	<ul style="list-style-type: none"> • waste/litter • brownfields • public housing conditions • exposure to common chemicals 	<ul style="list-style-type: none"> • debris/waste/litter • abandoned homes/ brownfields • violence • tornado damage 	<ul style="list-style-type: none"> • waterfront access • climate adaptation • waste management • recycling in residential, business, and school settings
Local Data Collected	<ul style="list-style-type: none"> • turnpike traffic • ozone • green space • blight • waste collection 	<ul style="list-style-type: none"> • school asthma rates • air pollution • water quality • brownfield sites 	<p>(in process of collecting local data)</p>

C-FERST Stakeholders

- **EPA Groups**
 - Regional project officers
 - Regional risk assessors (e.g., Compliance & Enforcement; EJ)
 - EPA Program Office risk assessors/managers
 - CARE, OEJ, OECA, OCHP
 - RAF Cumulative Risk Tech. Panel
- **Communities & Individuals**
- **Other Federal Agencies**
 - CDC (EPHTN, CAEPH)
 - NIEHS PEHP
- **Academia**
- **State & Local Agencies**



Overarching Lessons Learned about C-FERST

C-FERST is useful for:

- **Visualizing environmental information**
- Providing content for outreach materials
- Following step-by-step community guidance interactively
- Learning about community issues of concern

C-FERST needs more:

- ***Simplification & Flexibility*** – Different users will use the tool for different purposes, in different order, at different levels of complexity
- ***Direction*** – Crosswalks could play a larger role in the directing organization/flow of the site, but need enhancements
- ***Interaction*** – **Ability to add local data, save maps and tables, etc.**
- ***Risk Science & Communication*** – “What does this mean to me?”
- ***Decision Support Functionality*** – **“What if?” scenarios to inform decisions for sustainable and healthy communities**

Overarching Lessons Learned about Community Tool Development

Expectations:
Communicate, refine if needed, repeat

Easy access and user-friendliness critical to success:
Usability & IT challenges can make or break a public-facing tool

Community Tool development is a balancing act:
Provide valuable information & science tools
for complex, multi-step community assessment process while also

- keeping it simple and streamlined***
- avoiding bias in the process***
- avoiding bias in the information provided***
- respecting community empowerment***



It's All About Decision-Making

STEWARDSHIP

Enabling better
Decision-making



SUSTAINABILITY

The outcome of better
Decision-making



***“ . . . the goal of sustainability
is our “true north” . . . ”***

Dr. Paul Anastas, EPA Science Advisor
and Assistant Administrator for
Research and Development

Protecting America's Waters

STEWARDSHIP

Enabling better
Decision-making



SUSTAINABILITY

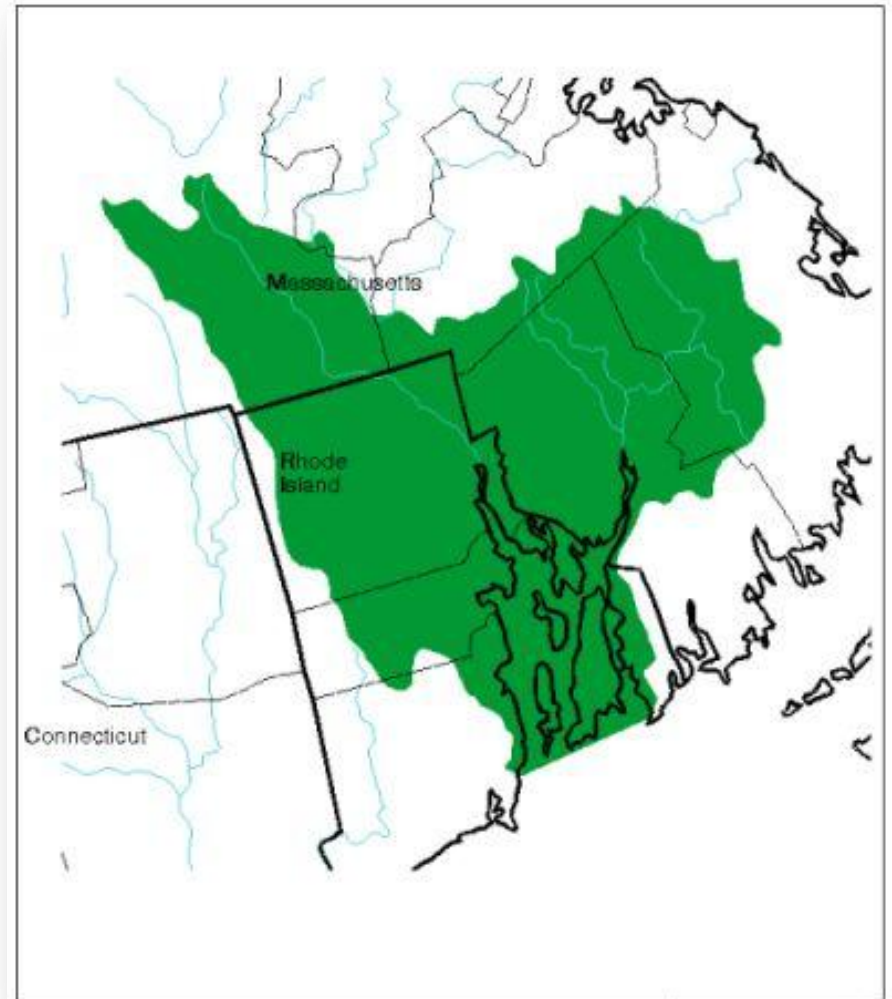
The outcome of better
Decision-making

Working with Stakeholders

- *expanding the conversation on environmentalism and*
- *building strong State and tribal partnerships*

Sustainability of a Resource: Narragansett Bay

- Apply Systems Thinking
- Develop an initial version of System Dynamics modeling tool
- **Obtain stakeholder insights & feedback from the start**



Systems Approach

- Interactive **system dynamics** model based on the **T21** platform from Millennium Institute
 - Explores how strategic options overall sustainability outcomes
 - Helps create portfolio of interventions to maximize stakeholder benefits
 - **Easy to use and understand by policy-makers and stakeholders**



“All models are wrong, but some models are useful”

From the Pillars of Sustainability to the “Triple Value” Framework

Economy

Society



economic value



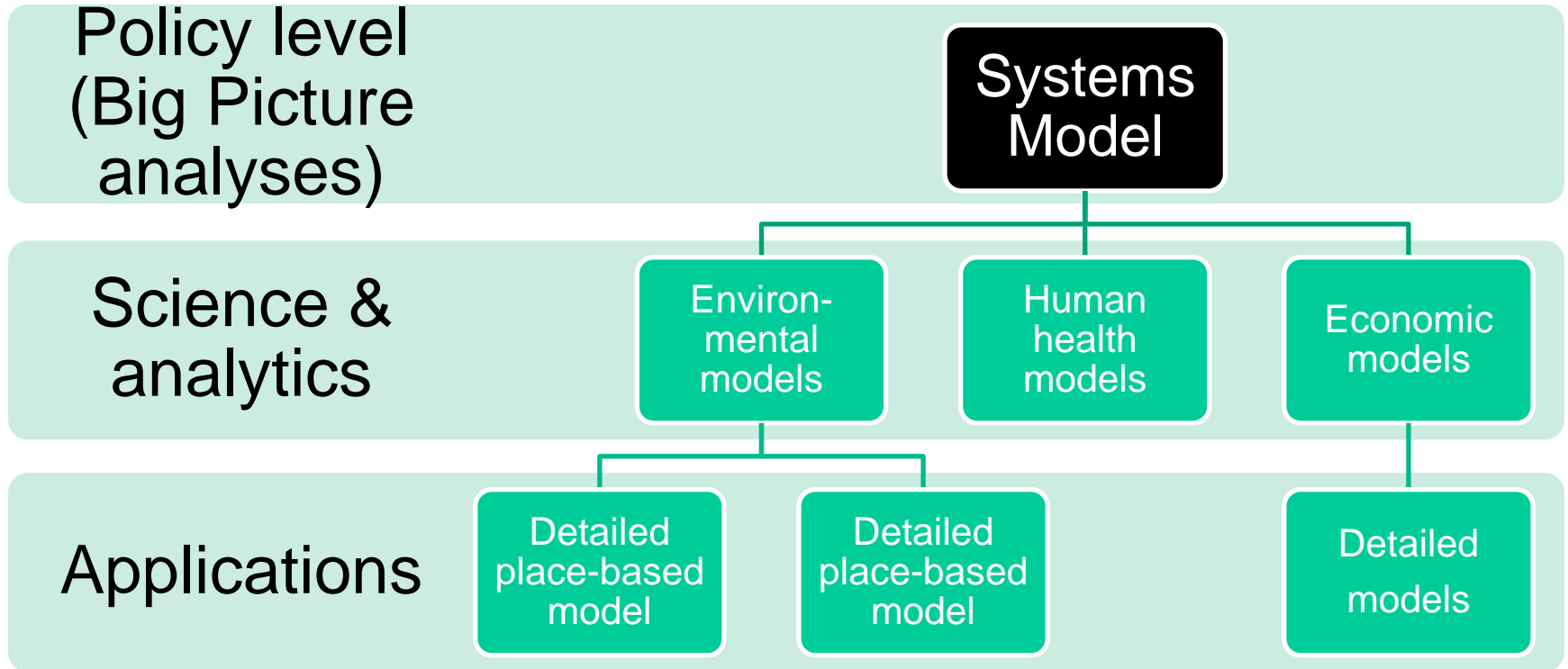
*agriculture, fishing,
industrial, and
commercial uses*

*runoff and
wastewater*

*drinking water,
recreation, and
cultural uses*

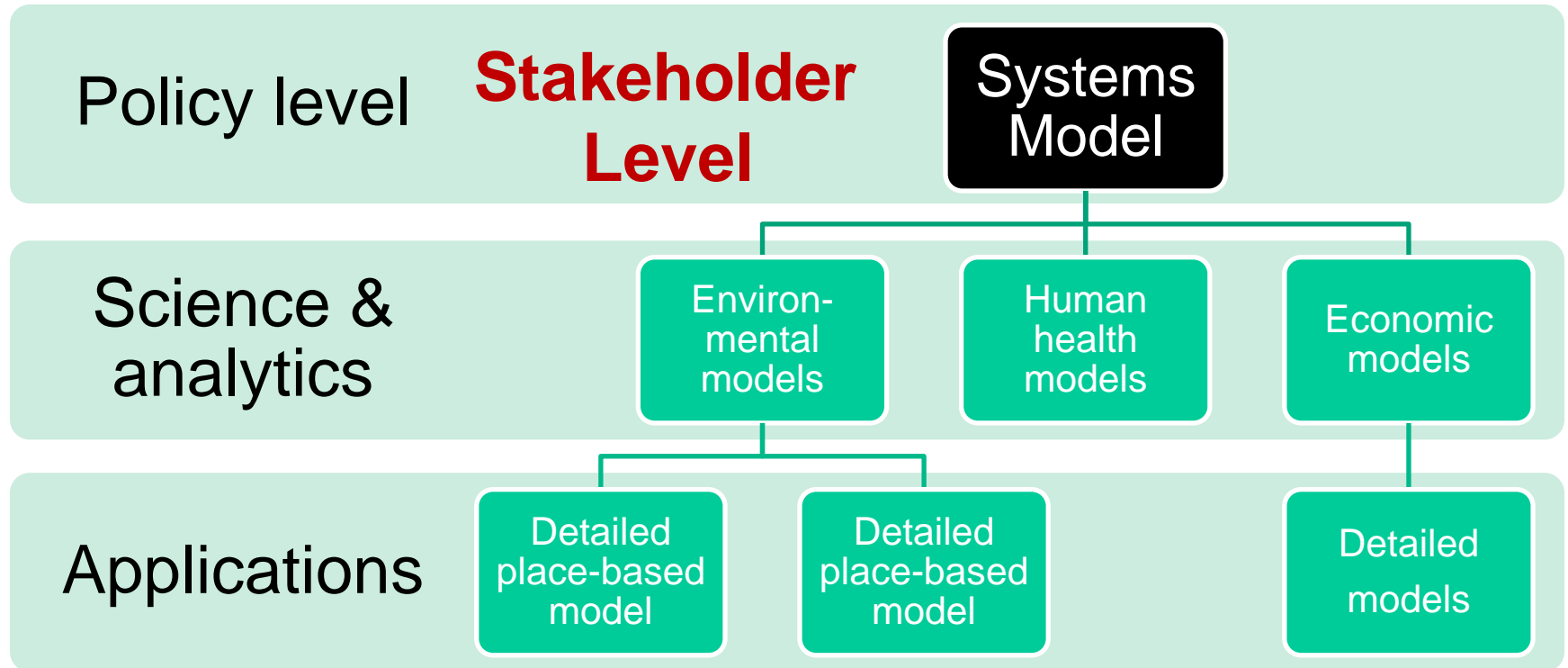
Environment
ecological resource base

Overview of Modeling Approach



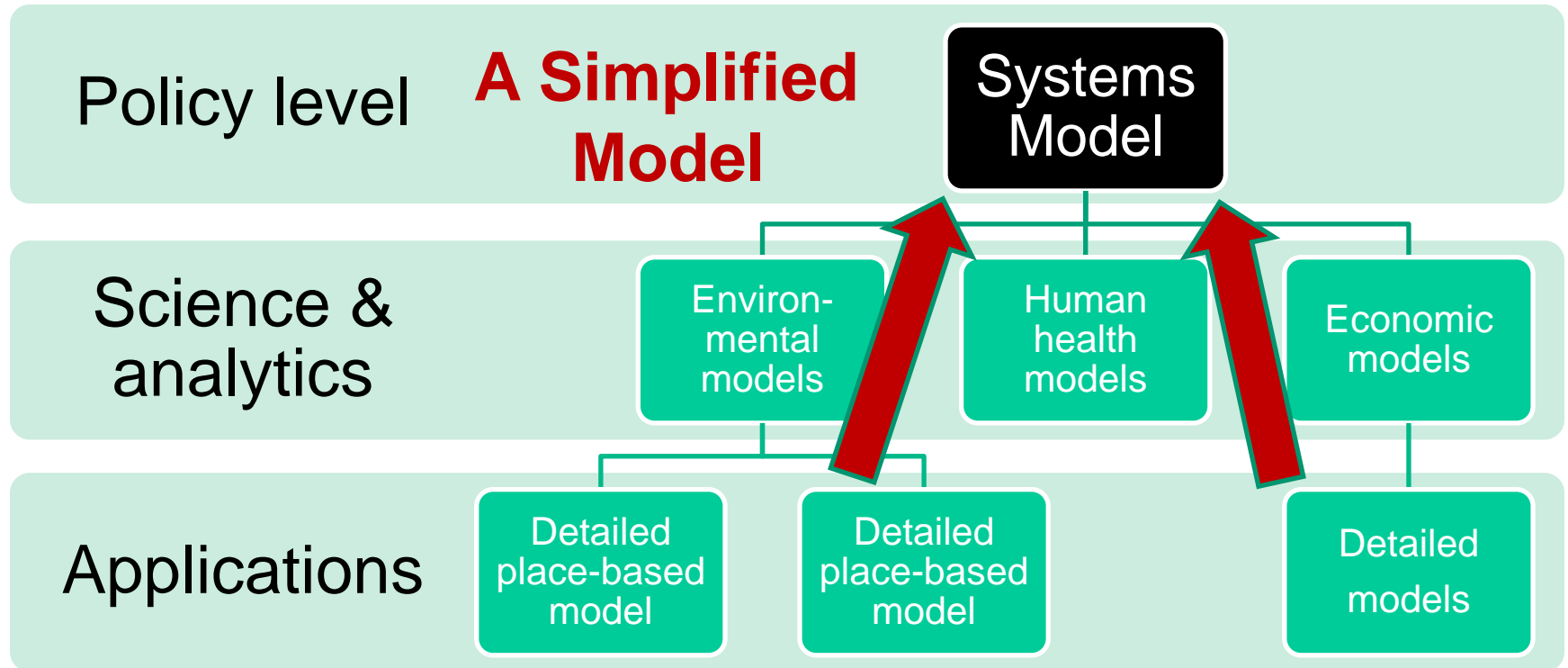
There is no single model that can address all the needs of decision makers and stakeholders at multiple scales

Overview of Modeling Approach



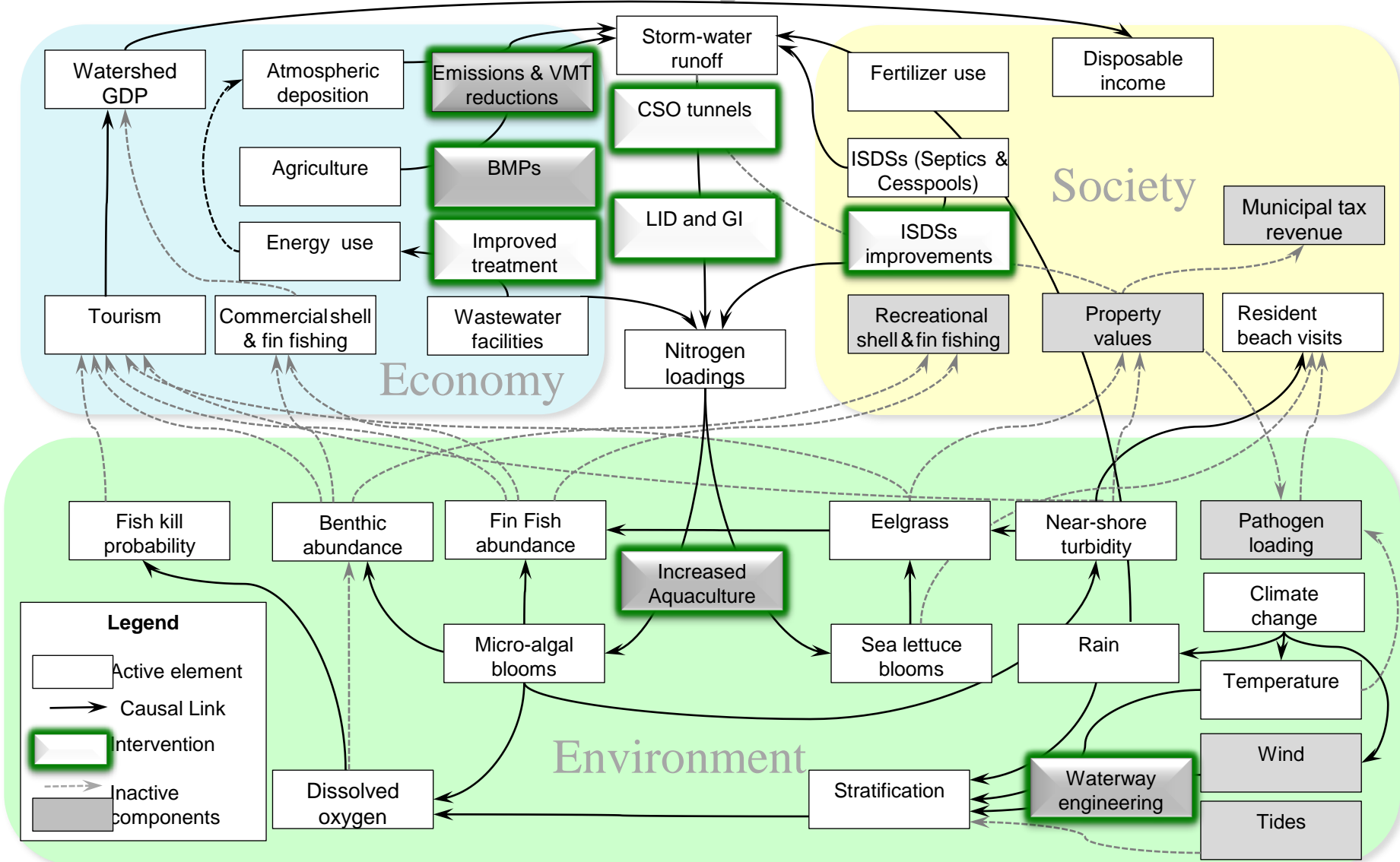
Shows how “INTERVENTIONS” could affect “INDICATORS” in the Big Picture!

Overview of Modeling Approach



There is no single model that can address all the needs of decision makers and stakeholders at multiple scales

Causal Relationships for Narragansett Bay



Requires lots of data—mostly provided by Stakeholders

Communities
of Practice



Data
Deliver for
Decisions

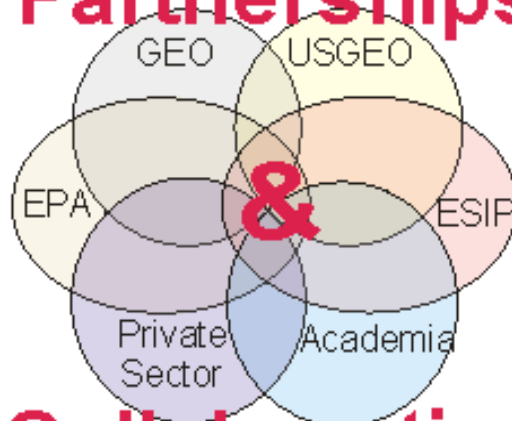
Communities

The
Public



Disadvantaged,
Under Served

Partnerships



Collaboration

Sustainable
Development

Stakeholders

Natural Resource
Sustainability
for Environment,
Economy & Society

Global Movements

Sustainable Development



Communities
of Practice



Data
Deliver for
Decisions

Sharing is Everything
*Eye on
Earth*
Network



a new global
public good

Communities



The
Public

Disadvantaged,
Under Served

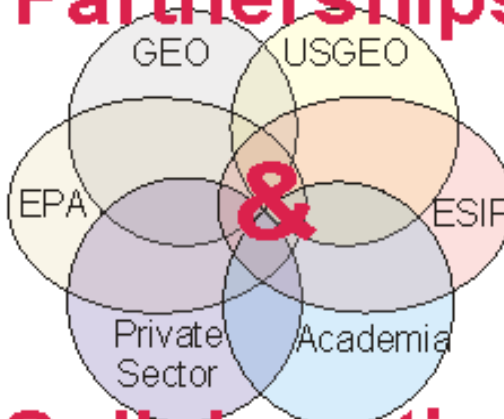
AirNow International



Personal Adaptive Mgmt

Global Movements

Partnerships



Collaboration

Sustainable
Development

Stakeholders

Natural Resource
Sustainability
for Environment,
Economy & Society

Sustainable Development



From AIRNow to “Community”

- The AIRNow experience has taught us several lessons
 - **Community is KEY** – 40% technology, 60% people
 - The public wants real-time environmental information, but depends upon the community to interpret it
 - The community provides the context that lies between the data and the public
- For sensitive subpopulations and families, AIRNow's forecasts **support “individual” adaptive management** to deal with residual AQ risk.

LIVE



Weather

O₃ ZONE

Oklahoma City

Dallas

Houston

San Antonio

- Moderate
- Unhealthy for Groups
- Unhealthy
- Hazardous



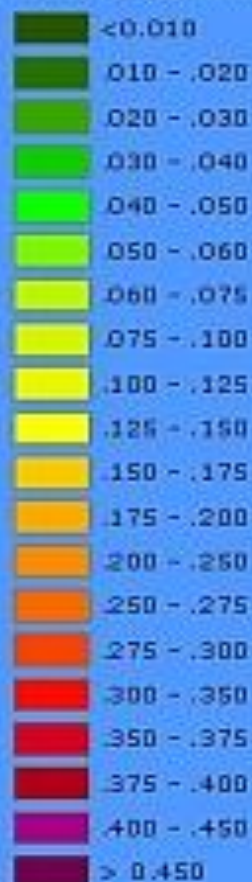
WWW.EPA.GOV/AIRN 3:23a PT



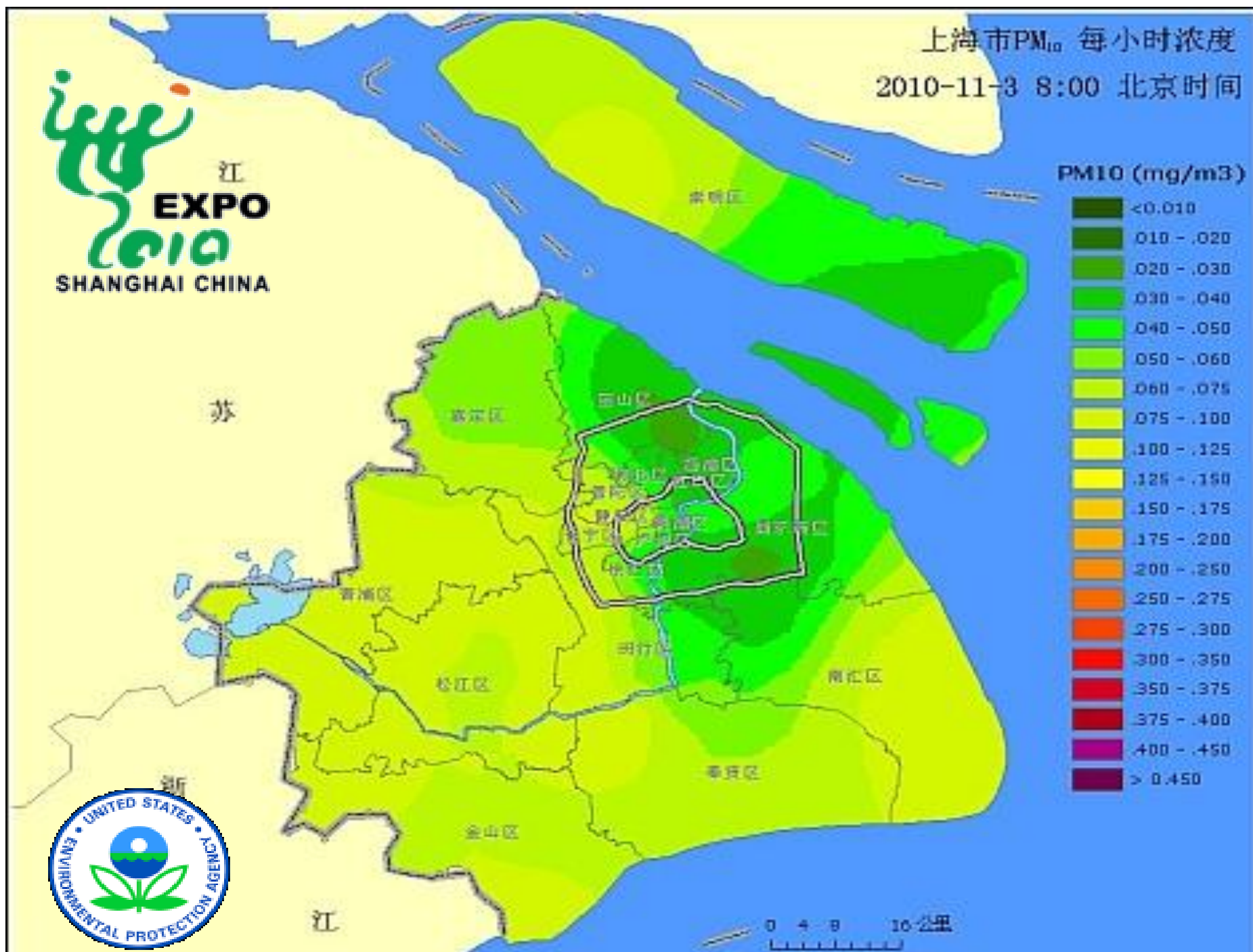
 江
EXPO
 2010
 SHANGHAI CHINA

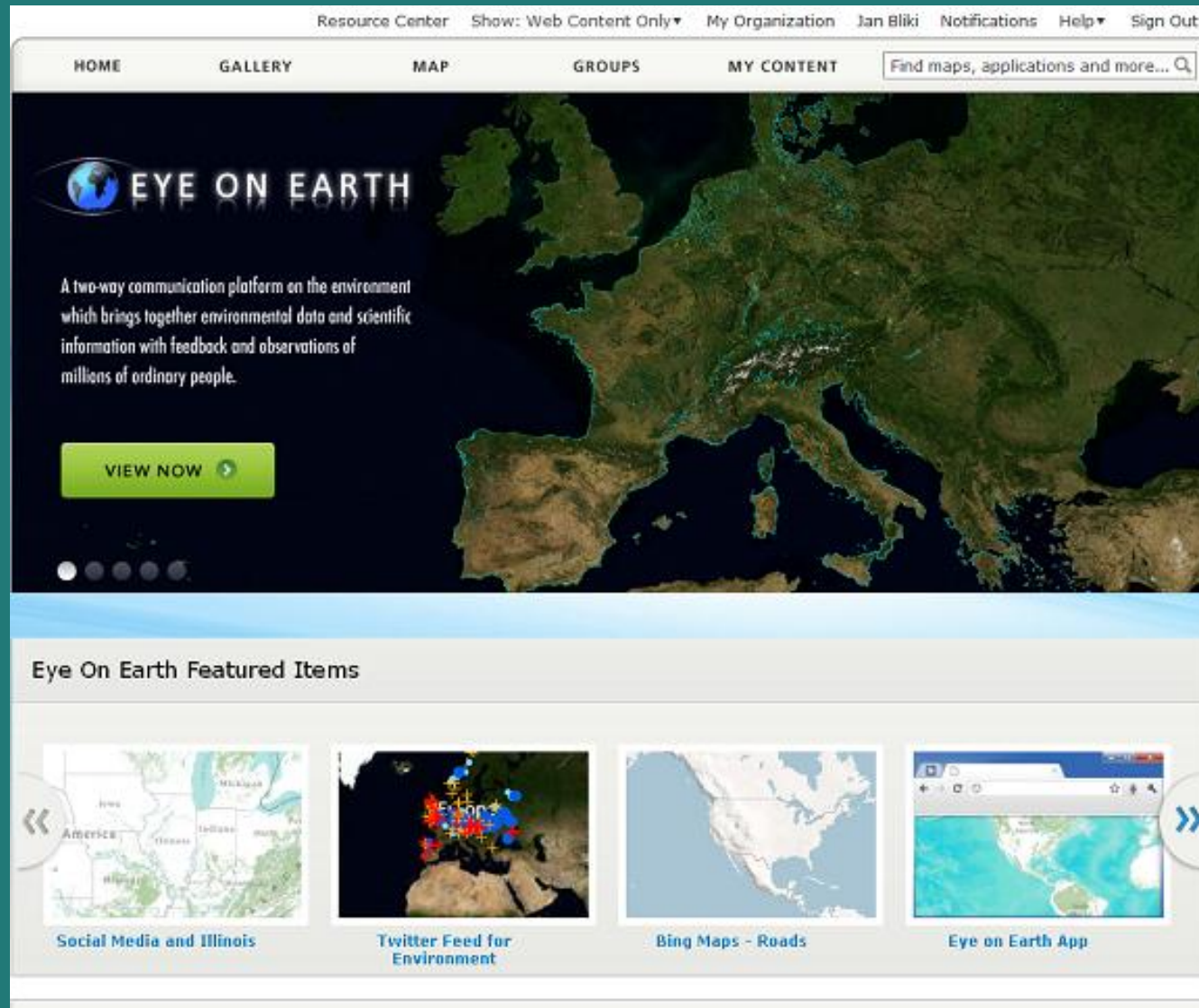
上海市PM₁₀ 每小时浓度
 2010-11-3 8:00 北京时间

PM10 (mg/m³)



0 4 8 16公里





Real-time Air Quality, Water Quality and Noise Quality Data to the Public



Integrating observations from citizen scientists and indigenous peoples

Great Backyard Bird Count Homepage - Microsoft Internet Explorer provided by EEA

http://www.audubon.org/gbbc/index.shtml

Google Search

Great Backyard Bird Count Homepage

Audubon

Give Now States, Centers & Chapters Birds & Science Issues & Action Education

Great Backyard Bird Count

Donate

Welcome

Count For Fun, Count For the Future: The 12th Annual Great Backyard Bird Count

Globe At Night 2006-2009

G&N Mapping Map Tools

Limiting Magnitude

- ☐ No Orion Data
- ☐ Mag 2 (Bright skies)
- ☐ Mag 3
- ☐ Mag 4
- ☐ Mag 5
- ☐ Mag 6
- ☐ Mag 7 (Dark skies)

Year 2009 data

Imagery

Data display: Global

Wide Legend

1000 km

1000 mi

Carrier 1:56 PM

NatureWatch

Observe My Nature

Get Trained Connect

Twitter: atelletxea

Artportalen.se

Species Gateway

Ident site for collecting sightings of species. Anyone - the general public, scientists, organisations - can contribute their data. Observations can only be used by the data within the relevant organisations and the Threatened species published first and are verified later by the relevant organisations.

by Report System

Species	This year	Yesterday	Today	Tot %
192	1 409 341	12 817	2 733	81.1%
108	180 382	1 217	500	13.3%
156	257 247	442	48	5.5%
369	4 535	28	2	0.1%
759	802	-	-	0.0%
126	1 824	-	-	0.0%
127	1 854 151	14 504	3 283	100%

Search in all databases

Swedish species atlas

Swedish species atlas

System for Birds

with the Swedish Ornithological Society

2000

System for Vascular Plants and Fungi

with the Swedish Botanical Society and Swedish

etv.

2003/summer 2007

System for Terrestrial and Linnic

es

with the Swedish Entomological Society

2003/autumn 2006

System for Mammals, Amphibians and

Amphibians and Reptiles

1007

System for Fish

and Marine Fish

1007

System for Marine Invertebrates

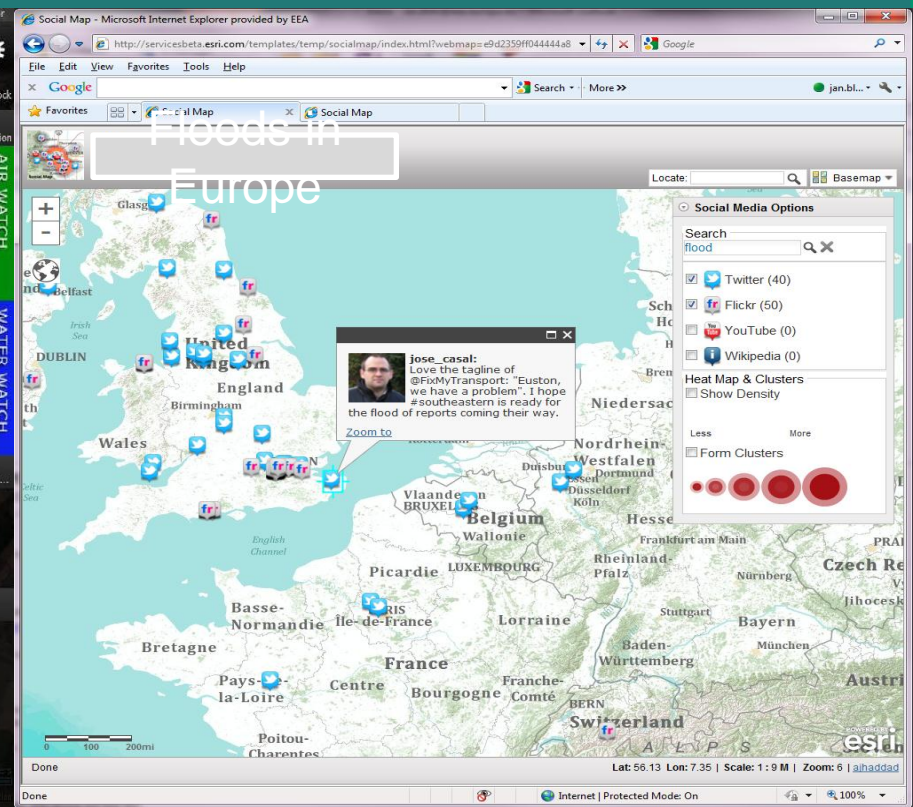
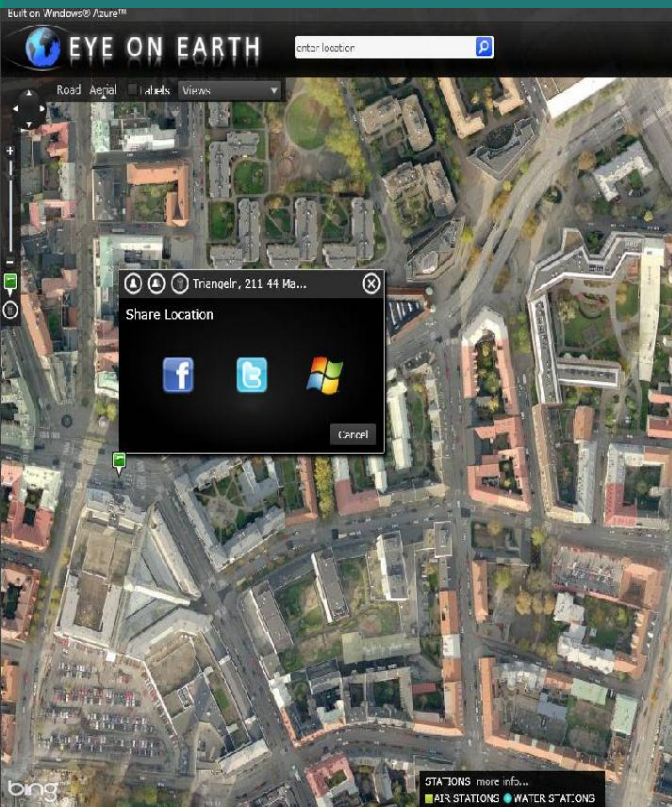
with Göteborgs Naturhistoriska museum

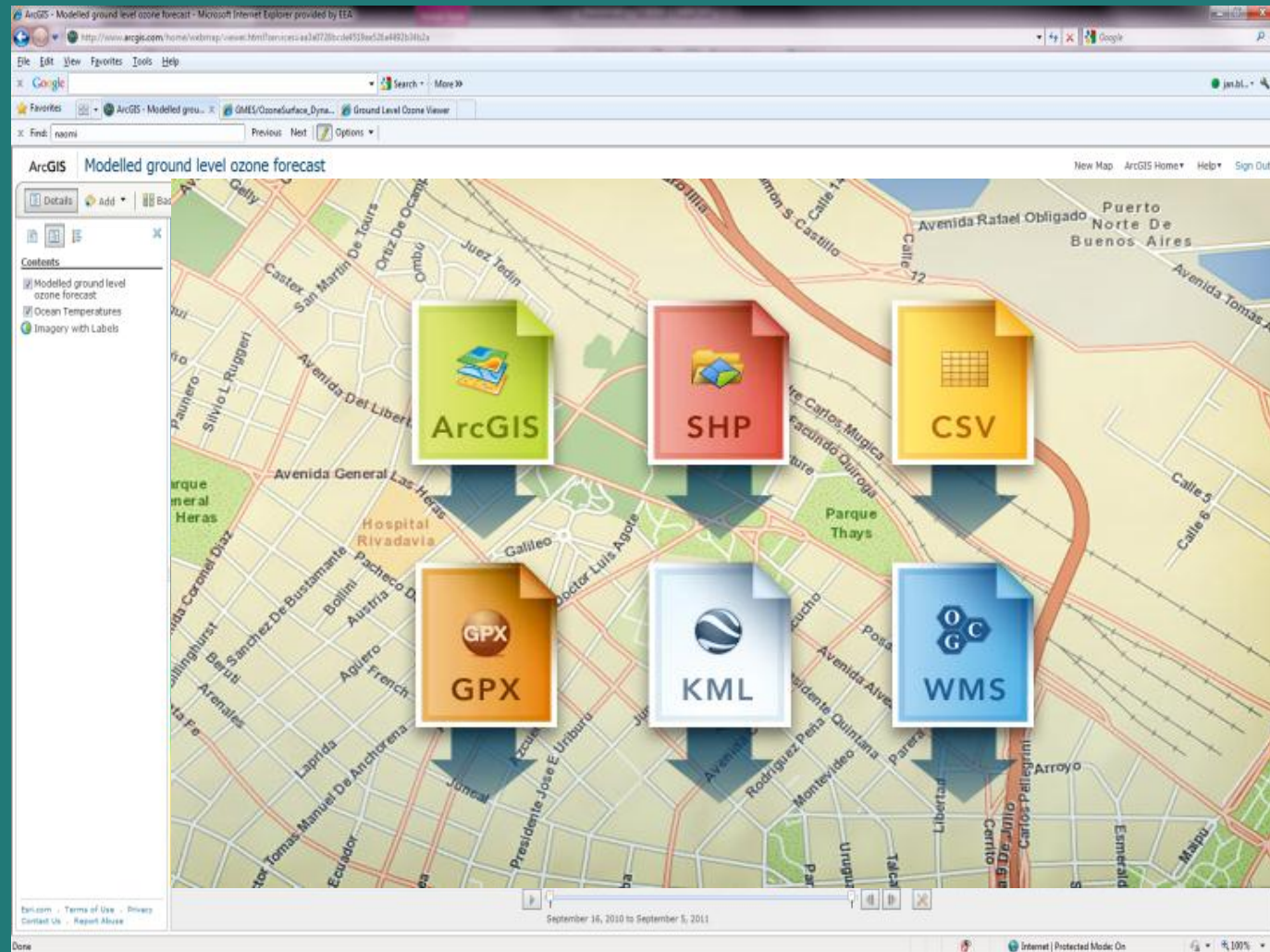
2007

Swedish Species Information Centre and Swedish Environmental Protection Agency

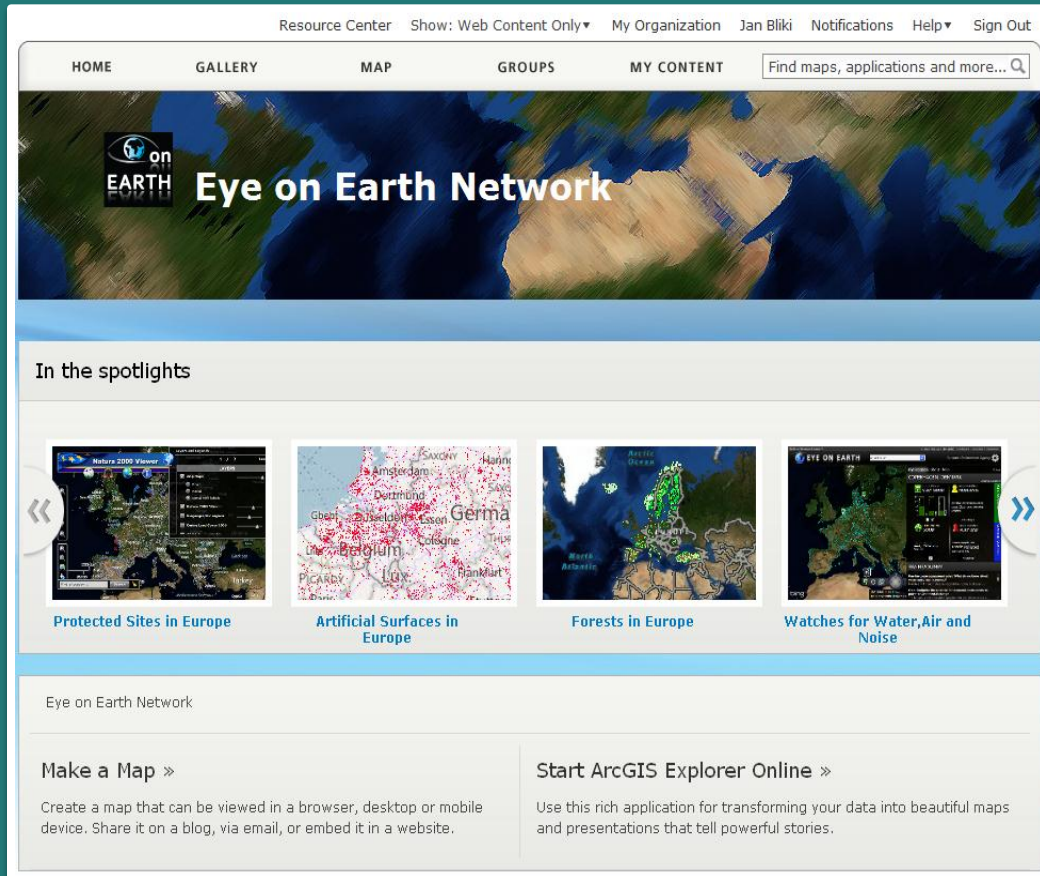


Social media integration





Global release at the Eye on Earth summit in Abu Dhabi 12–15 December 2011



All EEA applications
and available web-
services

Data from UN and other
international
organisations

National data, including
US data

Communities
of Practice



Data
Deliver for
Decisions

Sharing is Everything
*Eye on
Earth*
Network



a new global
public good

Communities



The
Public

Disadvantaged,
Under Served

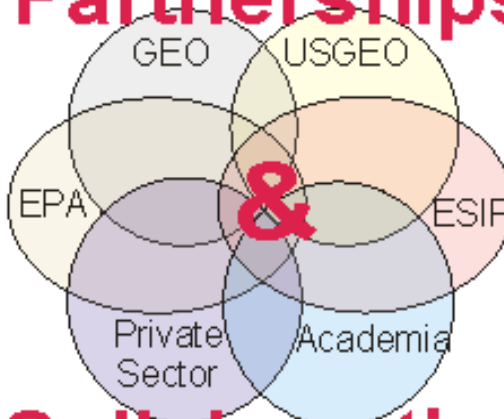
AirNow International



Personal Adaptive Mgmt

Global Movements

Partnerships



Collaboration

Sustainable
Development

Stakeholders

Natural Resource
Sustainability
for Environment,
Economy & Society

Sustainable Development





FROM A MOMENT TO A MOVEMENT

Representatives from government, business, science, civil society and academia came to join forces to:

- ***CONVENE*** TO CELEBRATE 'BEST-IMPACT' DATA INITIATIVES FROM AROUND THE GLOBE;
- ***CONVERGE*** ON KEY ISSUES TO REACH CONSENSUS ON SOLUTIONS TO GREATER DATA ACCESSIBILITY;
- ***COLLABORATE*** TO STRENGTHEN EXISTING INITIATIVES AND, WHERE NECESSARY, LAUNCH NEW ONES.

FROM A MOMENT TO A MOVEMENT

The **Eye on Earth Summit** has enabled

- global leaders,
- innovators and
- decision-makers

to focus on an “*issue upon which our planet’s future depends*”:

- how to ensure ***effective access*** to the world's expanding pool of environmental and societal data by all of those who need it.

Eye on Earth: Press Headlines

- Abu Dhabi meeting approves 'Declaration of intentions' (some focused on Rio+20)
- Brazil pushes for global information convention
- Help plug data gaps, urges senior UN official
- Why city resilience will be an issue at Rio+20
- Geospatial initiative shows the way
- Information networks--bridging the gap between geeks and suits
- Quality control challenges for citizen science
- The sense and sensitivity of technology for all

Communities
of Practice



Data
Deliver for
Decisions

Sharing is Everything
*Eye on
Earth
Network*



a new global
public good

Communities



The
Public

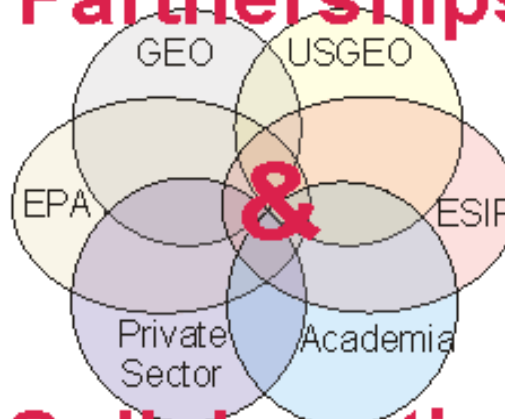
Disadvantaged,
Under Served

AirNow International



Personal Adaptive Mgmt

Partnerships



Collaboration

Sustainable
Development

Stakeholders

Natural Resource
Sustainability
for Environment,
Economy & Society

Global Movements

Convene, Converge
Collaborate



From a Moment to a Movement

Sustainable Development



Communities
of Practice



Data
Deliver for
Decisions

Push for data
access at Rio+20

Sharing is Everything
Eye on
Earth
Network



a new global
public good

Communities



The
Public

Disadvantaged,
Under Served

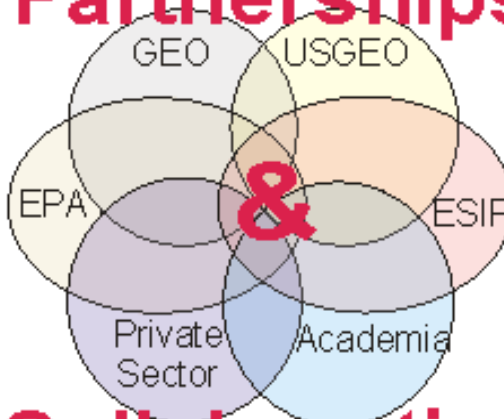
City resilience will be
an issue at Rio+20

AirNow International



Personal Adaptive Mgmt

Partnerships



Collaboration

Stakeholders

Natural Resource
Sustainability
for Environment,
Economy & Society

Global Movements

Convene, Converge
Collaborate



From a Moment to a Movement

Sustainable
Development

WGs on biodiversity,
blue carbon, water,
disaster mgmt,
urban environment
work up to Rio+20.

Sustainable Development



**“Those who collaborate
will prosper.”**

**Secretary Mike Leavitt,
speaking to USGEO,
2005**

Thank you!